



# MEMO From METRO

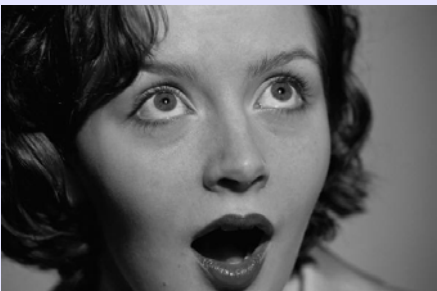
Volume 9  
Issue 1  
Winter 2006

Exclusively serving the employees of local municipalities and

## THIS IS GREAT NEWS!

*WATCH YOUR MAIL FOR AN EXCITING ANNOUNCEMENT ABOUT EXPANDED CAPABILITIES FOR YOU AND YOUR NEIGHBORS FROM METRO.*

*WE CAN'T SAY MORE AT THIS TIME. BUT GET READY TO HELP US SPREAD THE GOOD NEWS.*



## *FREE MONEY FOR YOUR RETIREMENT*

Are you leaving "free money" on the table because you're not taking advantage of all the retirement tax savings available to you?

For more information please call us at 847/670-0456. Or stop in at our office and talk to our Member Services staff.

First, take advantage of all of your employer sponsored retirement benefits. Then, consider opening a personal IRA for your self or your spouse if you are eligible. A METRO Member Services Rep can help you determine your eligibility with the help of your employer's Human Resources department.

METRO offers both traditional and Roth IRA savings accounts and certificates. Your money will grow and provide additional financial security for your future retirement while providing meaningful tax benefits for you today.



## *ANNOUNCING HIGHER SAVINGS RATES*

Earn **4.07% APY for \$5,000** deposited in a METRO Certificate of Deposit **for 9 months**. This special rate and term are available for new deposits only. Or, earn **4.06% APY for 12 months** with transfers of \$10,000 from other METRO accounts. Earn **2.07% APY** on VIP Money Market **balances over \$50,000**.

Call for more information on our current rates for other certificate terms and account balances

Benefit from higher rates and the peace of mind knowing your funds are insured up to \$100,000 by the National Credit Union Administration (NCUA).





(847) 670-0456  
 Fax (847) 670-0401  
 loanservices@mcu.org  
 accountservices@mcu.org

**LOBBY**

Monday—Friday  
 8:00 AM to 6:00 PM  
 Saturday  
 8:00 AM to 1:00 PM

**DRIVE-THRU**

Monday—Friday  
 7:00 AM to 6:00 PM  
 Saturday  
 7:00 AM to 1:00 PM

**METRO ATM LOCATIONS**

Open 24 Hours  
 7 Days A Week

METRO Office  
**2440 E. Rand Road**  
 Arlington Heights

Arlington Heights Police Dept.  
**33 S. Arlington Heights Road**  
 Arlington Heights

Hoffman Estates Police Dept.  
**1200 Gannon Drive**  
 Hoffman Estates

Schaumburg Police Dept.  
**1000 W. Schaumburg Road**  
 Schaumburg

**BOARD OF DIRECTORS  
 AND OFFICERS**

**David Schultz** Chairman  
**Roger Mueller** Vice Chairman  
**Sue Gwinnup** Secretary  
**Dean Stewart** Treasurer  
**Ed Geiss** Director  
**Ted Loesch** Director  
**Donna Wilson** Director  
**Richard Marra** President  
**Salvatore Fragale** Vice-President  
**Danielle Gross** Operations Officer



*BE AN EARLY BIRD  
 BUY YOUR TICKET BEFORE JANUARY 15TH  
 GET A SECOND TICKET FREE*

Join us for dinner and participate in METRO's 33rd Annual Meeting on Friday, February 24, 2006 at the Wellington of Arlington located at 2121 South Arlington Heights Road in Arlington Heights. METRO's annual business meeting will be held before dinner.

Since the three current directors whose terms expire this year are the only announced candidates, no balloting will be required. In place of individual balloting, a voice vote confirming re-election of the three announced candidates may be taken during the annual meeting.

The following three candidates are seeking re-election at this year's meeting.

**Sue Gwinnup,  
 Dean Stewart, and  
 Ed Geiss**

**Sue Gwinnup** is Superintendent of Recreation for the Arlington Heights Park District and has been a board member since 1991 and a credit union member since 1983.

**Dean Stewart** has been a credit union member since 1985 and served as a board member since

1993. He is a retired Captain of the Arlington Heights Fire Department.

**Ed Geiss** is retired from the Village of Arlington Heights where he was the Director of Human Services. Ed has been a credit union member since 1983 and has served as a Director since 2001.

The annual meeting will begin at 6:30 pm. Dinner will follow the business meeting. Music and dancing will begin after dinner. Dinner tickets are \$30.00 per person and are available at METRO's office.



**Pictured above are Ed Geiss (left), Sue Gwinnup (center) and Dean Stewart (right)**

*2006 HOLIDAY CLOSING SCHEDULE*

New Year's Day  
 President's Day  
 Memorial Day  
 Independence Day  
 Labor Day  
 Columbus Day  
 Veterans Day  
 Thanksgiving Day  
 Staff/Director Lunch  
 Christmas Day

Monday, January 2  
 Monday, February 20  
 Monday, May 29  
 Tuesday, July 4  
 Monday, September 4  
 Monday, October 9  
 Saturday, November 11  
 Thursday, November 23  
 Wednesday, December 13,  
**METRO will close at Noon**  
 Monday, December 25